

Enquiry Curriculum Map

This map shows areas of study for Year 6 and gives you a flavour of the questions we will be investigating. Within each area the learning and expected outcomes will be scaffolded appropriately for your child

Geography and D&T

As geographer and Engineers, we will look closely at its main ingredients, exploring their origins around the world. We will then look closely at food production around the UK, and discuss how and why geographical areas and climate can affect where food is grown. We will be designing and making our own pizzas, based on healthy food choices and locally sourced ingredients as well as considering how labelling affects our food choices. We will learn how food is prepared safely, and will get the chance to sample some ingredients for ourselves!

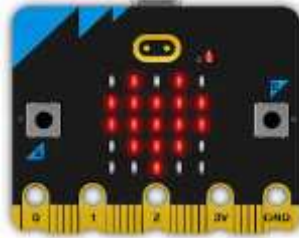
Author

As authors, we will be continuing to write for a range of different purposes including balanced arguments, instructions for making pizzas and story writing.



Computer Engineer

As computer engineers, we programming micro-bits to make their own emoji badges.



Where does our food really come from?

Term 3

Year 6

Philosopher: RE

As philosophers, we will be answering the big question of: What do religions say about the care for the environment? This will include an aspect of humanism as well as delving into Christianity, Judaism and Hinduism.



Mathematician

As mathematicians, we will be looking at decimals, percentage and fractions, ratio, shape and angles. Every morning, we will also be revising arithmetic methods that we have already covered.

Musician: As musicians, we will be playing and composing music using staff notation and block chords.



Philosopher: PSHE

As philosophers, we are looking at why dreams and goals are important to us.

Athlete

As athletes, we will be developing our gymnastic skills with Bristol sport and netball with Mrs Stephens.



Linguist

As linguists, we are learning to describe our village or town and using shop names and key places.